

(02) 6382 1000  
 96 Main St, Young NSW

[www.southerncrosscinema.org](http://www.southerncrosscinema.org)  
[info@southerncrosscinema.org](mailto:info@southerncrosscinema.org)

## THE SUPER MARIO GALAXY MOVIE



Mario, Luigi, and their friends embark on an epic, cosmic adventure of galactic proportions when Bowser Jr. arrives to rescue his captive father and conquer the galaxy.

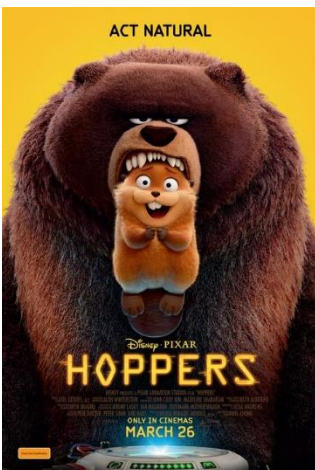
**Rated PG** (Mild threat and violence), 98 mins

Thu 16 Apr	1.30pm
Fri 17 Apr	10.30am
Sun 19 Apr	2.00pm
Mon 20 Apr	10.30am
Tue 21 Apr	1.30pm

**SPECIAL FUNDRAISER SCREENING for Young & District Netball Association**

Sat 18 Apr	2.00pm
------------	--------

## HOPPERS



An animal lover uses technology to transfer her mind into a lifelike robotic beaver, to communicate with the animal world, uncover mysteries, and rally the entire animal kingdom to save their habitat.

**Rated PG** (Mild threat), 104 mins

Thu 16 Apr	10.30am
Fri 17 Apr	1.30pm
Sat 18 Apr	11.00am
Sun 19 Apr	11.00am
Mon 20 Apr	1.30pm
Tue 21 Apr	10.30am



A small goat with big dreams gets a once-in-a-lifetime shot to join the pros and play Roarball, a high-intensity, co-ed, full-contact sport dominated by the fastest, fiercest animals in the world.

**Rated PG** (Mild crude humour, animated violence and coarse language), 100 mins

Wed 08 Apr 10.30am  
Wed 08 Apr 1.30pm

Fri 10 Apr 10.30am  
Sun 12 Apr 1.00pm

# THE MAGIC FARAWAY TREE



A modern family relocates to the countryside where the children discover a magical tree with eccentric residents. They're transported to fantastical lands, rekindling their family bond through adventures.

**Rated G** (Very mild slapstick violence and some scenes may scare very young children), 104 mins

Thu 09 Apr 1.30pm  
Fri 10 Apr 1.30pm  
Sat 11 Apr 2.00pm  
Wed 15 Apr 10.30am  
Wed 15 Apr 1.30pm

**(G)** – General Exhibition

**(PG)** – Parental Guidance recommended

**(M)** – Recommended for mature audiences

**(MA15+)** – Under-15s must be accompanied by an adult/guardian

**(R18+)** – Restricted to 18 years and older

**(CTC)** – Check the classification closer to release

<b>TICKET PRICES</b>	<b>ADULT</b>	\$16.00
	<b>ALL OTHERS</b> (SENIORS, CHILD, CONCESSION, etc)	\$13.00
	<b>HARTS MEMBERS</b>	\$12.00
	<b>FAMILY PASS</b>	\$50.00
	(2A/2C or 1A/3C)	

<b>CINEMA OFFICE HOURS</b>	<b>Monday</b>	Closed
	<b>Tuesday</b>	Closed
	<b>Wednesday</b>	10.00am – 1.00pm
	<b>Thursday</b>	9.00am – 1.00pm
	<b>Friday</b>	9.00am – 1.00pm
	<b>Saturday</b>	1.00pm – 6.00pm
	<b>Sunday</b>	1.00pm – 5.00pm

# REMINERS OF HIM



After prison, Kenna seeks redemption and forgiveness and attempts to reconnect with her young daughter, but faces resistance.

**Rated M** (Mature themes and coarse language), 114 mins

Sat 11 Apr 5.00pm  
Sun 12 Apr 4.00pm

Sat 18 Apr 5.00pm  
Sun 19 Apr 5.00pm

# PROJECT HAIL MARY

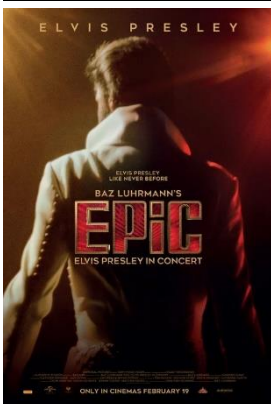


Science teacher Ryland Grace wakes up alone on a spaceship. As his memory returns, he uncovers a mission to stop a mysterious substance killing Earth's sun, and that an unexpected friendship may be the key.

**Rated M** (Science fiction themes), 157 mins

Thu 30 Apr 10.30am  
Sat 02 May 2.00pm  
Sat 02 May 5.30pm  
Sun 03 May 1.00pm  
Sun 03 May 4.30pm

# EPIC – ELVIS PRESLEY IN CONCERT



From visionary director Baz Luhrmann, a cinematic celebration of Elvis Presley at the height of his powers, featuring long-lost footage from his legendary 1970s Las Vegas residency woven together with rare 16mm footage from Elvis on Tour.

**Rated PG** (Mild coarse language), 96 mins

Thu 02 Apr 10.30am  
Sat 04 Apr 2.00pm  
Sat 04 Apr 5.00pm

# APRIL CALENDAR

THURSDAY 02		FRIDAY 03		SATURDAY 04		SUNDAY 05	
10.30	EPIC – ELVIS	GOOD FRIDAY		2.00	EPIC – ELVIS	EASTER SUNDAY	
				5.00	EPIC – ELVIS		

WEDNESDAY 08		THURSDAY 09		FRIDAY 10		SATURDAY 11		SUNDAY 12	
10.30	GOAT	<i>(10.30 – private screening)</i>		10.30	GOAT	2.00	MAGIC FARAWAY TREE	1.00	GOAT
1.30	GOAT	1.30	MAGIC FARAWAY TREE	1.30	MAGIC FARAWAY TREE	5.00	REMINDEERS OF HIM	4.00	REMINDEERS OF HIM

WEDNESDAY 15		THURSDAY 16		FRIDAY 17		SATURDAY 18		SUNDAY 19	
10.30	MAGIC FARAWAY TREE	10.30	HOPPERS	10.30	SUPER MARIO GALAXY	11.00	HOPPERS	11.00	HOPPERS
1.30	MAGIC FARAWAY TREE	1.30	SUPER MARIO GALAXY	1.30	HOPPERS	2.00	SUPER MARIO GALAXY – FUNDR	2.00	SUPER MARIO GALAXY
						5.00	REMINDEERS OF HIM	5.00	REMINDEERS OF HIM

MONDAY 20		TUESDAY 22	
10.30	SUPER MARIO GALAXY	10.30	HOPPERS
1.30	HOPPERS	1.30	SUPER MARIO GALAXY

THURSDAY 30		FRIDAY 01 MAY		SATURDAY 02 MAY		SUNDAY 03 MAY	
10.30	PROJECT HALL MARY			2.00	PROJECT HALL MARY	1.00	PROJECT HALL MARY
				5.30	PROJECT HALL MARY	4.30	PROJECT HALL MARY

CINEMA CLOSED – WEDNESDAY 23 APRIL TO WEDNESDAY 29 APRIL

## PROUD SPONSORS OF SOUTHERN CROSS CINEMA



[WWW.SOUTHERNCROSSCINEMA.ORG](http://WWW.SOUTHERNCROSSCINEMA.ORG)

We reserve the right to refuse entry | Session times may be subject to change  
 Bookings are recommended for all sessions: please call (02) 6382 1000, email [info@southerncrosscinema.org](mailto:info@southerncrosscinema.org),  
 or contact us via Facebook or the website