

# SOUTHERN CROSS CINEMA

(02) 6382 1000  
96 Main St, Young NSW

# SESSION TIMES SEPTEMBER 2024

[www.southerncrosscinema.org](http://www.southerncrosscinema.org)  
[info@southerncrosscinema.org](mailto:info@southerncrosscinema.org)

## BEETLEJUICE BEETLEJUICE



After a family tragedy, three generations of the Deetz family return home to Winter River. Still haunted by Beetlejuice, Lydia's life is turned upside down when her teenage daughter, Astrid, accidentally opens the portal to the Afterlife.

**Rated M** (Supernatural themes and coarse language), 105 mins

Thu 26 Sep	1.00pm
Fri 27 Sep	6.00pm
Sat 28 Sep	6.00pm
Sun 29 Sep	4.00pm

## IT ENDS WITH US



Lily Bloom overcomes a traumatic childhood, starts a new life, and falls in love, but soon discovers her new love has a terrible dark side. When Lily's first love suddenly re-enters her life, she realizes she must learn to rely on her own strength to make an impossible choice for her future.

**Rated M** (Family violence and references to sexual violence), 130 mins

Thu 05 Sep	10.30am
Sat 07 Sep	2.00pm
Sun 08 Sep	1.00pm
Fri 13 Sep	6.00pm
Sat 14 Sep	5.00pm
Sun 15 Sep	4.00pm

# DEADPOOL & WOLVERINE



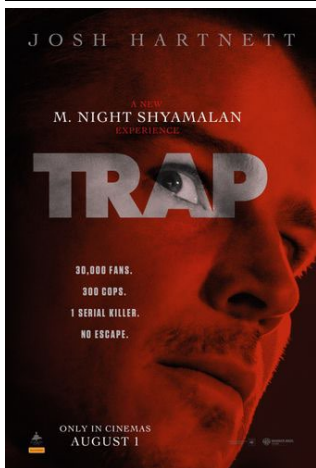
A listless Wade Wilson toils away in civilian life with his days as the morally flexible mercenary, Deadpool, behind him. But when his homeworld faces an existential threat, Wade must reluctantly suit-up again with an even more reluctant Wolverine.

**Rated MA15+** (Strong crude sexual humour, bloody violence and coarse language), 128 mins

Please note: This film is rated MA15+. Under 15s must be accompanied by a parent or adult guardian. IDs will be checked.

Fri 06 Sep 6.00pm  
Sat 07 Sep 5.00pm  
Sun 08 Sep 4.00pm

# TRAP



"What if The Silence of the Lambs happened at a Taylor Swift concert?"  
A father and teen daughter attend a pop concert, where they realize they're at the centre of a dark and sinister event.

**Rated M** (Sustained threat and coarse language), 105 mins

Thu 12 Sep 10.30am  
Sat 14 Sep 2.00pm  
Sun 15 Sep 1.00pm  
  
Sun 22 Sep 4.00pm

<b>TICKET PRICES</b>	<b>ADULT</b>	\$15.00
	<b>ALL OTHERS</b> (SENIORS, CHILD, CONCESSION, etc)	\$12.00
	<b>HARTS MEMBERS</b>	\$10.00
	<b>FAMILY PASS</b> (2A/2C or 1A/3C)	\$45.00

<b>CINEMA OFFICE HOURS</b>	<b>Monday</b>	Closed
	<b>Tuesday</b>	Closed
	<b>Wednesday</b>	10.00am – 1.00pm
	<b>Thursday</b>	9.00am – 1.00pm
	<b>Friday</b>	9.00am – 1.00pm
	<b>Saturday</b>	1.00pm – 6.00pm
	<b>Sunday</b>	1.00pm – 5.00pm

(G) – General Exhibition  
(PG) – Parental Guidance recommended  
(M) – Recommended for mature audiences  
(MA15+) – Under-15s must be accompanied by an adult/guardian  
(R18+) – Restricted to 18 years and older  
(CTC) – Check the classification closer to release

# TINDERELLA

## Tinderella

& the eight unique uses of Tinder

SOUTHERN  
CRIBS  
CINEMA

Sat 21 Sept  
Doors at 6.00pm  
18+ Audience

Tickets on sale now



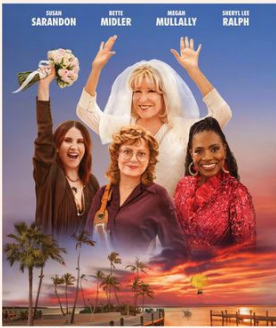
This live comedy stage show takes you through the highs and horrors of dating in the modern age. A rowdy good time, filled with laughter, oversharing, and a wholesome message. Spreading joy, bringing people together for a fun night out, and leaving audiences sore from laughter!

**Recommended for 18+ Audience**

Sat 21 Sep      Doors at  
6.00pm

TICKETS      \$25  
\$20 Conc

# THE FABULOUS FOUR



THE FABULOUS FOUR

FOUR FRIENDS. ONE WEDDING. LOTS OF BAGGAGE.

FROM THE DIRECTOR OF THE DRESSMAKER

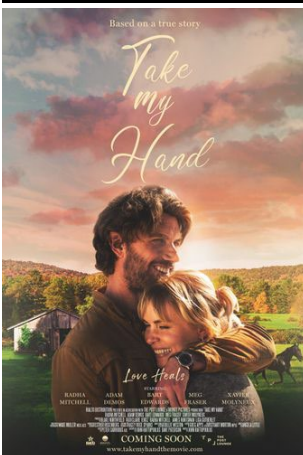
ONLY IN CINEMAS AUGUST 1

A group of life-long friends travel to Key West, Florida, to be bridesmaids in their college friend's surprise wedding. Over the course of one outrageous trip, sisterhoods are rekindled, the past resurfaces, and there are enough sparks, raunch, and romance to change all their lives in unexpected ways.

**Rated M** (Coarse language, drug use and sexual references), 99 mins

Thu 19 Sep      10.30am  
Sat 21 Sep      1.00pm  
Sun 22 Sep      1.00pm

# TAKE MY HAND



Based on a true story

Take  
my  
Hand

Love Hands

BAHENA ASAM SNEYD MCGEE SWEENEY

MEYERHILL FORDSON

COMING SOON

www.lovehands.com.au

Living in London, a mother of three is diagnosed with MS. Following a tragedy she moves back home to Australia, where a chance encounter with her high school sweetheart gives her renewed hope in love and survival.

**Rated M** (Mature themes and coarse language), 102 mins

**PREMIERE FUNDRAISER presented by  
MS SOCIETY**

Sat 28 Sep      2.00pm

# SEPTEMBER CALENDAR

THURSDAY 05		FRIDAY 06		SATURDAY 07		SUNDAY 08	
10.30	IT ENDS WITH US	6.00	DEADPOOL & WOLVERINE	2.00	IT ENDS WITH US	1.00	IT ENDS WITH US
				5.00	DEADPOOL & WOLVERINE	4.00	DEADPOOL & WOLVERINE

THURSDAY 12		FRIDAY 13		SATURDAY 14		SUNDAY 15	
10.30	TRAP	6.00	IT ENDS WITH US	2.00	TRAP	1.00	TRAP
				5.00	IT ENDS WITH US	4.00	IT ENDS WITH US

THURSDAY 19		FRIDAY 20		SATURDAY 21		SUNDAY 22	
10.30	THE FABULOUS FOUR			1.00	THE FABULOUS FOUR	1.00	THE FABULOUS FOUR
				6.00	TINDERELLA	4.00	TRAP

THURSDAY 26		FRIDAY 27		SATURDAY 28		SUNDAY 29	
1.00	BEEETLEJUICE BEEETLEJUICE	6.00	BEEETLEJUICE BEEETLEJUICE	2.00	TAKE MY HAND	1.00	TRANSFORMERS ONE
				6.00	BEEETLEJUICE BEEETLEJUICE	4.00	BEEETLEJUICE BEEETLEJUICE

## PROUD SPONSORS OF SOUTHERN CROSS CINEMA



[WWW.SOUTHERNCROSSCINEMA.ORG](http://WWW.SOUTHERNCROSSCINEMA.ORG)

We reserve the right to refuse entry | Session times may be subject to change

Bookings are recommended for all sessions: please call (02) 6382 1000, email [info@southerncrosscinema.org](mailto:info@southerncrosscinema.org), or contact us via Facebook or the website